

unimed

**UNIMED WEEK
IN BRUSSELS**

19-21 MARCH 2019



Co-funded by the
Erasmus+ Programme
of the European Union



THE FASTEST GROWING INTERNATIONAL
UNIVERSITY

The changing nature of crisis in the MENA region: The university perspective

“Higher & Secondary Education in Crisis Situations in
Lebanon: The Way towards Enabling Conditions
in synergizing Policies with Good Practices The Case of the
Lebanese International University”

Prepared By
**Anwar Kawtharani / Samir AbouNassif / Ali
Tarabay**
Presented
Anwar Kawtharani



CONTENTS

• SYRIA REFUGEE RESPONSE	03
• INT FINANCIAL STATUS	07
• SCHOOLS & UNIVERSITIES	08
• PROJECT SEAD AT LIU	12
• LIU STRATEGY	14
• CHALLENGES	27
• REFLECTION	29
CONTACTS	30



UNIMED WEEK IN BRUSSELS

19-21 MARCH 2019



SYRIA REFUGEE RESPONSE

LEBANON Time-series Syrian Refugees Registered by Cadastral in Lebanon as of 30 April 2014

The information contained in this report is for informational purposes only. It is not intended to be used for legal or other purposes. The UNHCR is not responsible for any errors or omissions in this report. The UNHCR is not responsible for any damages or losses resulting from the use of this report. The UNHCR is not responsible for any copyright or trademark infringement. The UNHCR is not responsible for any other legal or other consequences.

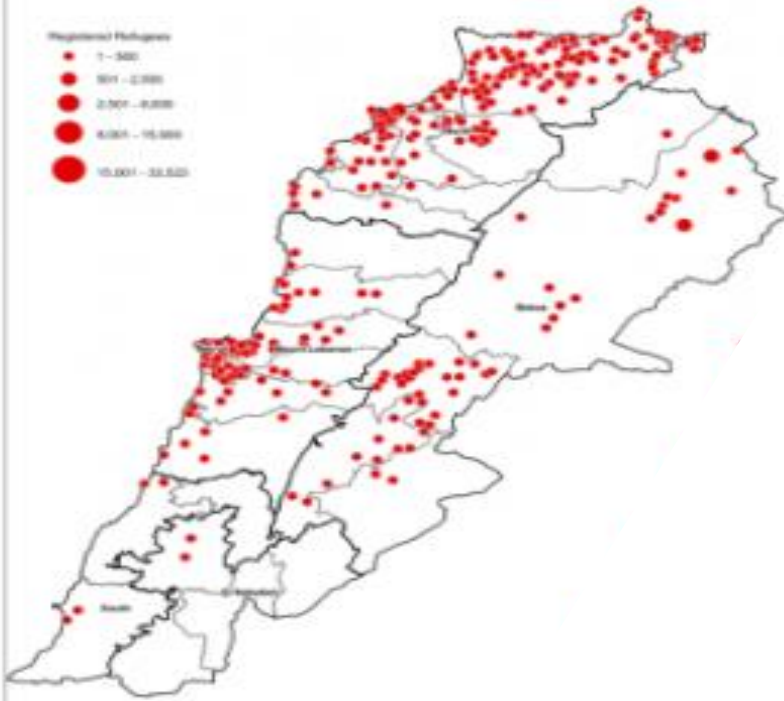
June 2012

25,411

Total No. of Refugees

Registered Refugees

- 1 - 500
- 501 - 1,000
- 1,001 - 2,500
- 2,501 - 5,000
- 5,001 - 10,000
- 10,001 - 25,000

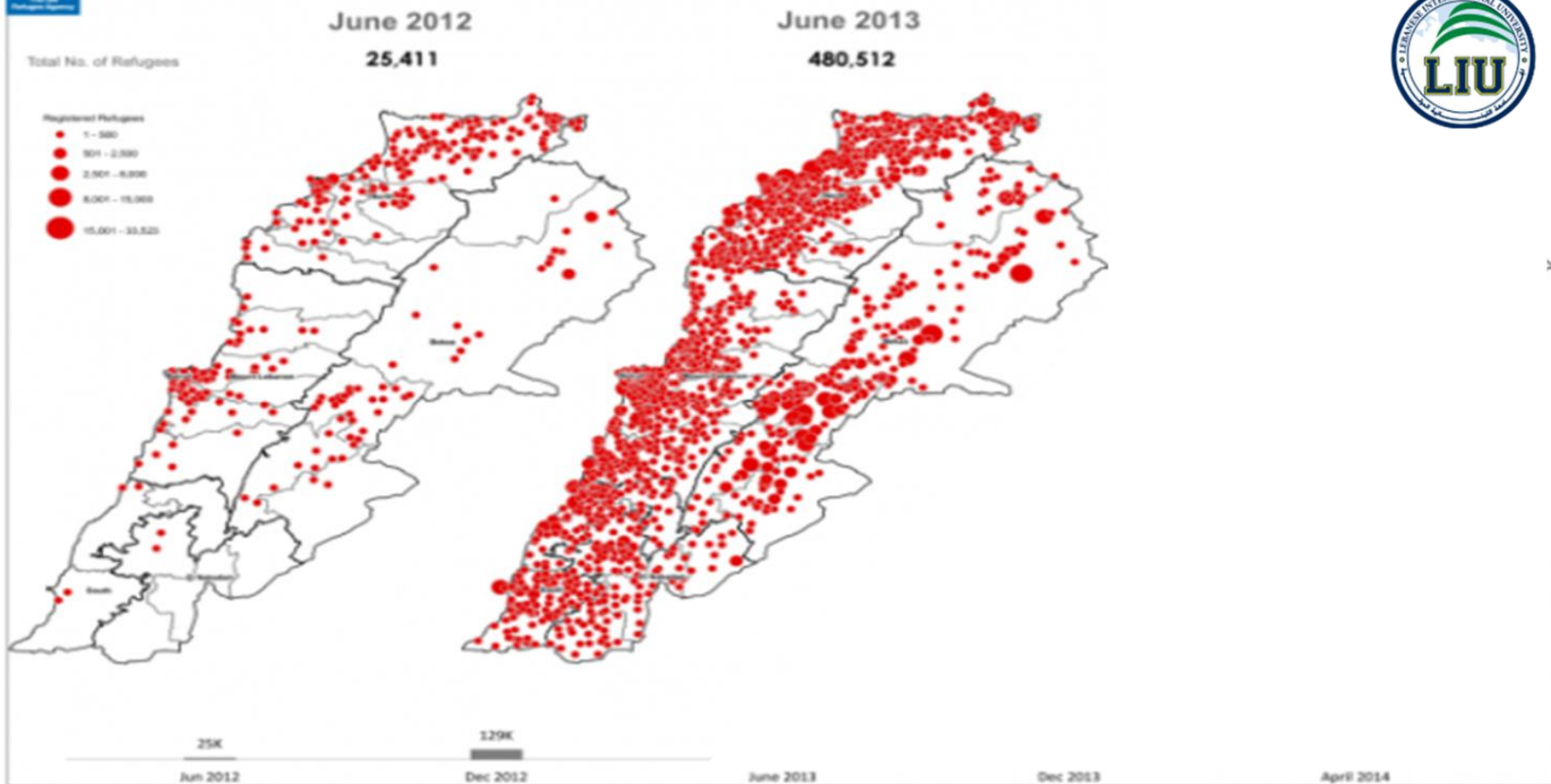




SYRIA REFUGEE RESPONSE

LEBANON Time-series Syrian Refugees Registered by Cadastral in Lebanon as of 30 April 2014

The information on this page is for informational purposes only and does not constitute an offer of any financial product or service. It is not intended to be used as a basis for investment decisions. The information is provided as a general overview and does not represent a complete and accurate picture of the situation. The information is subject to change without notice. The information is provided as a general overview and does not represent a complete and accurate picture of the situation. The information is subject to change without notice.



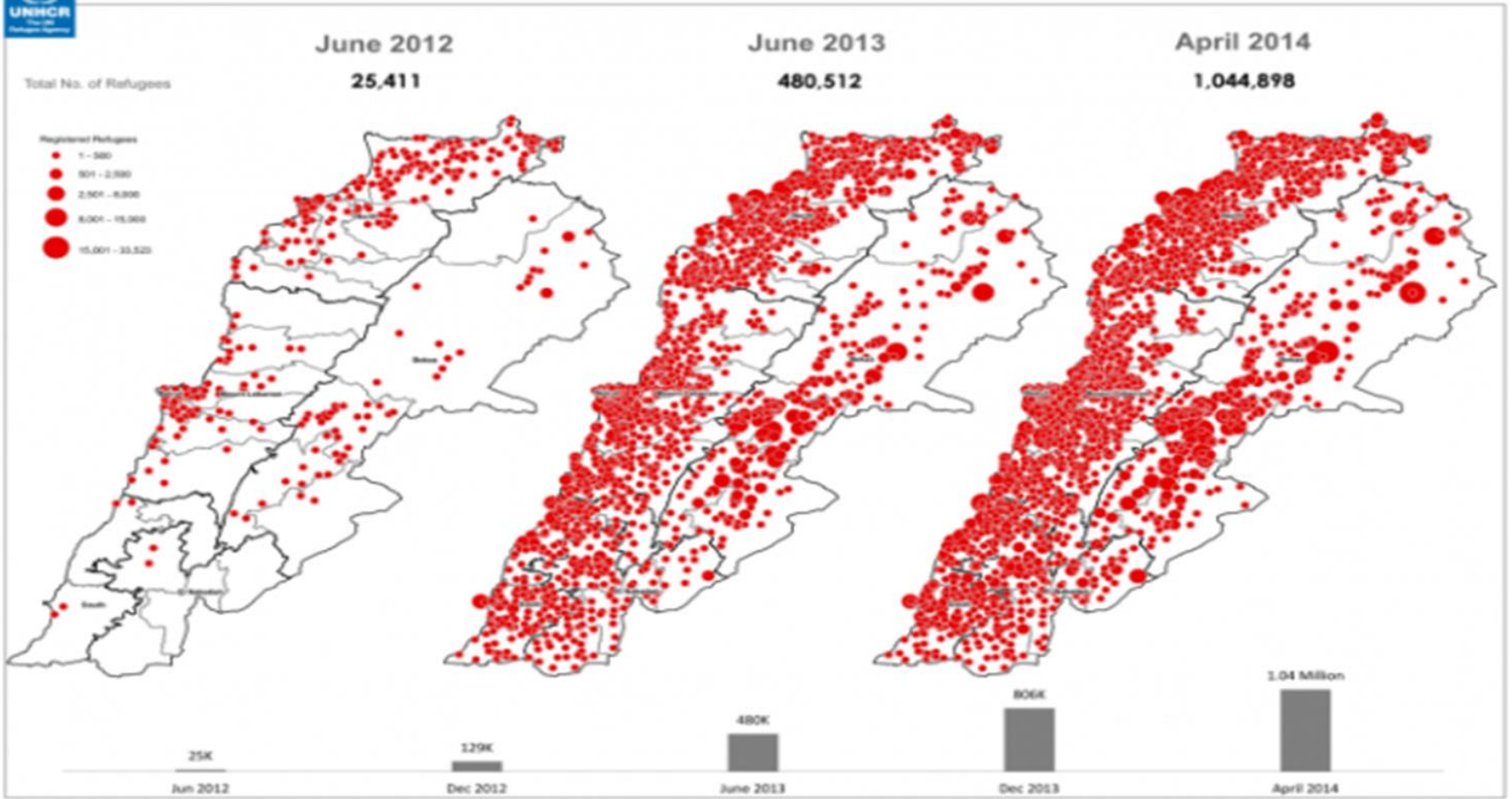
UNIMED WEEK IN BRUSSELS
19-21 MARCH 2019

SYRIA REFUGEE RESPONSE

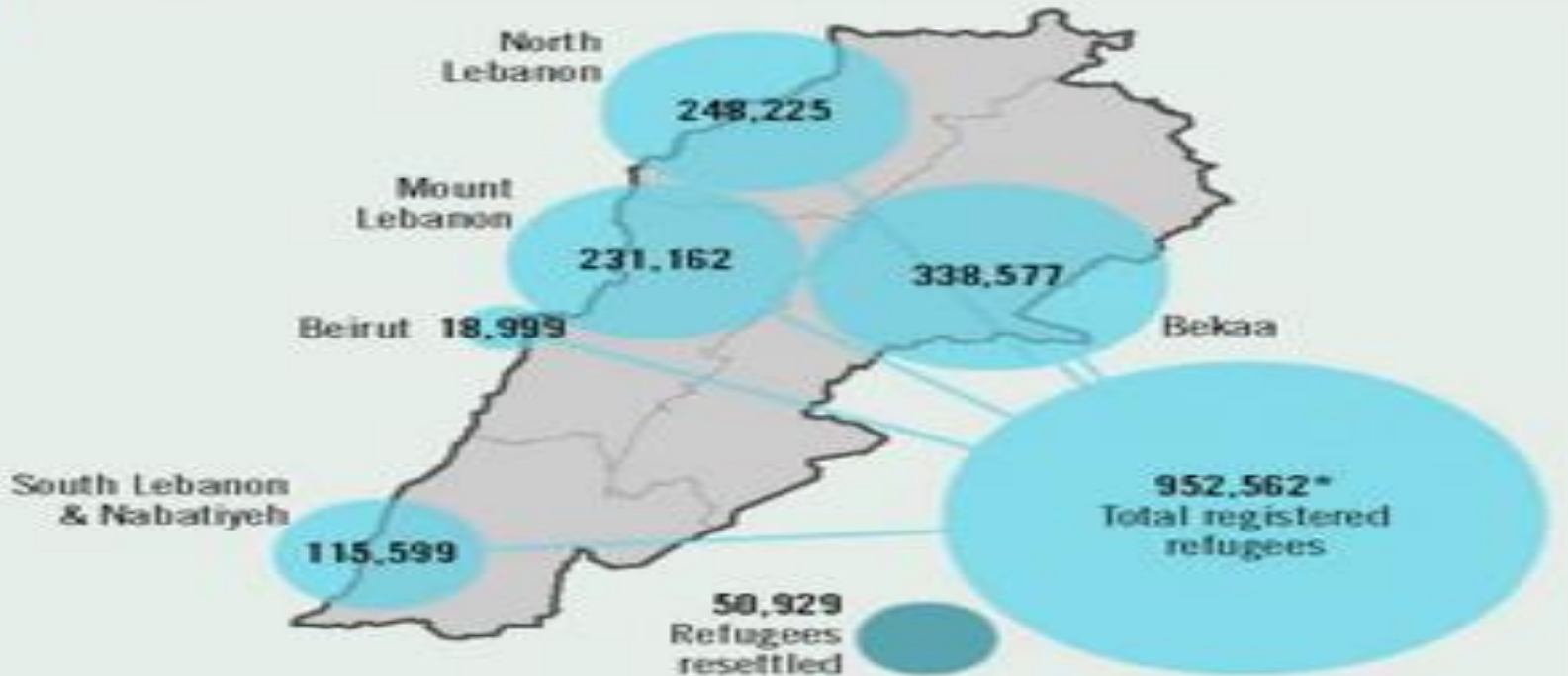
LEBANON Time-series Syrian Refugees Registered by Cadastral in Lebanon as of 30 April 2014



The boundaries, names, and geographical locations shown on this map do not imply any endorsement or approval by the United Nations of the boundaries, names, or geographical locations of any territory, or the authority of any government, or the status of any territory, or the status of any city, village, or locality. The United Nations is not responsible for any errors or omissions in this map, and it is not liable for any damages resulting from its use. All other rights are reserved. For more information, please contact the United Nations Office for the Coordination of Humanitarian Affairs, 300 Rue de la Woluwe, 1200 Brussels, Belgium. E-mail: unohcr@unhcr.org



REGISTERED SYRIAN REFUGEES IN LEBANON



Refugee numbers for end September each year. *Registration of refugees was suspended in May 2015 upon request by Lebanese Authorities.

Sources: UNHCR, FTS UN OCHA

© 2018 Executive.com, llc

<i>YEAR</i>	<i>REGISTERED SYRIAN REFUGEES</i>	<i>TOTAL POPULATION OF LEBANON</i>	<i>PERCENTAGE SYRIAN REFUGEES</i>
2011	6,290	4,592,000	0.14
2012	129,106	4,924,000	2.62
2013	858,641	5,287,000	16.24
2014	1,158,995	5,612,000	20.65
2015	1,069,111	5,851,000	18.27
2016	1,033,513	5,988,000	17.26

POPULATION OF REGISTERED SYRIAN REFUGEES IN LEBANON (UNDESA, 2016; UNHCR, 2016B).

Target Population



Issam Fares Institute for Public Policy and International Affairs

معهد عصام فارس للسياسات العامة والشؤون الدولية

Male (47.5%)

- 8.5%
- 12.4%
- 7.1%
- 18.3%
- 1.2%

Age

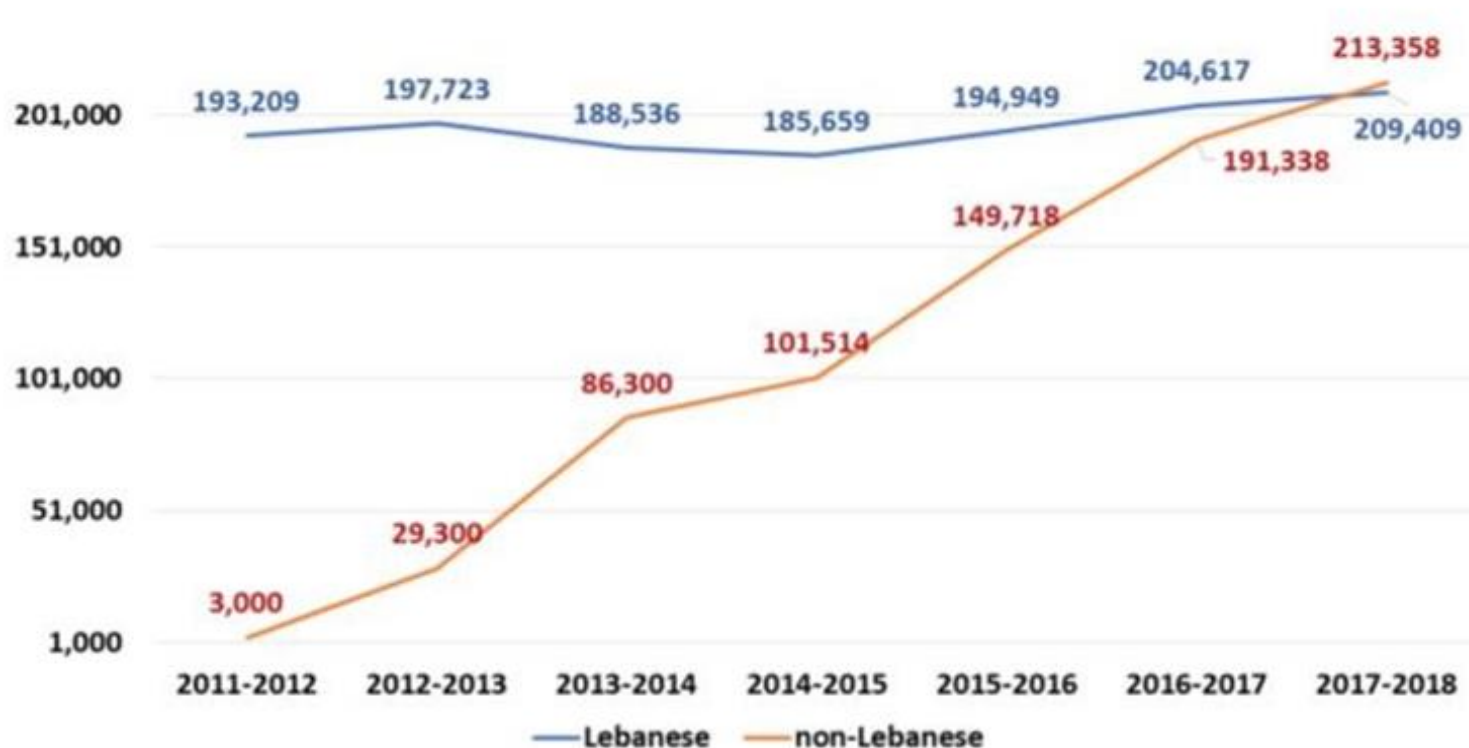


101,892

140,000 births between 2013-2018

SIMPLE TWO COLUMN

Enrolment Trend of Lebanese and Non-Lebanese Students in Public Schools (KG-G9)





TOTAL NUMBER OF
TERTIARY EDUCATION
INSTITUTIONS IN
LEBANON
BY TYPE FOR THE
YEAR 2016 (SOURCE:
MEHE WEBSITE, 2016)

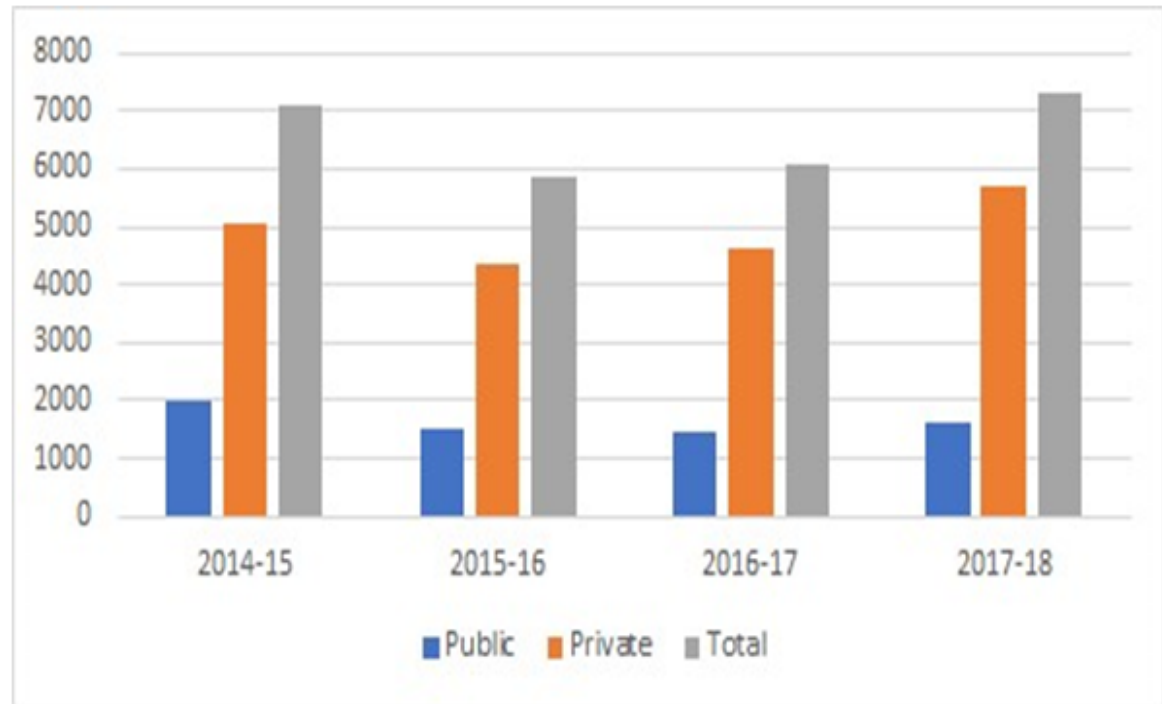
<i>TYPE OF INSTITUTION</i>	<i>NUMBER OF INSTITUTIONS</i>
Public University	1
Private Universities (Licensed and operational)	35
Private University Institutes and colleges	9
Private University Institutes of Theology	3
Private Universities (Licensed but not operational)	3



SIMPLE TWO COLUMN

Enrollment of Syrian students in tertiary education in Lebanon form 2014-15 to 2017-18

	Public	Private	Total
2014-15	2013	5059	7072
2015-16	1490	4370	5860
2016-17	1466	4599	6065
2017-18	1400	5715	7115



Impact of R-SOS office at the Lebanese International



Location



Bekaa Campus



Beirut Campus

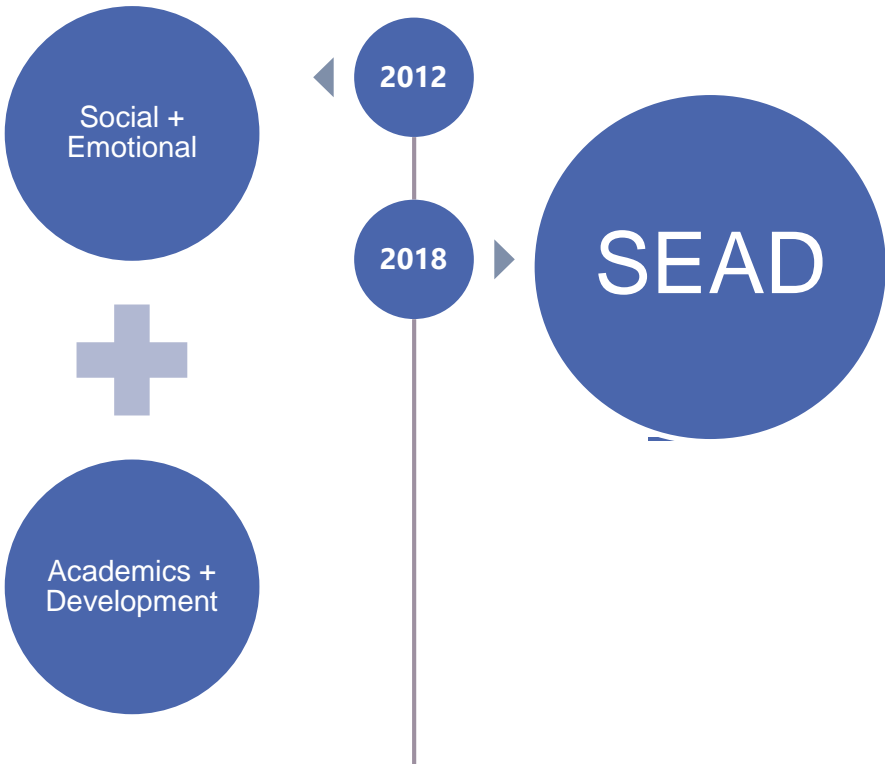


9 campuses in Bekaa, Rayak, Saida, Nabatieh, Tyre, Mount Lebanon, Tripoli, and Halba-Akkar, Beirut



UNIMED WEEK IN BRUSSELS
19-21 MARCH 2019

LIU
Scheme
aiming to
assist



Indicator of SYRIAN Students enrollment at LIU: 2012-2018

Academic Year	Lebanese University	Total Private Univ	Total Syrians Reg. at LIU	Level	Registered nos.	Total Syrians Graduated at LIU	Level	Graduated nos.	Total Syrians Dropped out at LIU	Level	Dropped out nos.	New Students
2012-2013	NA	NA	553	Undergraduate	513	23	undergraduate	22	171	Undergraduate	154	321
				Graduate	40		Graduate	1		Graduate	17	
2013-2014	NA	NA	663	Undergraduate	616	37	Undergraduate	34	164	Undergraduate	148	305
				Graduate	47		Graduate	3		Graduate	16	
2014-2015	2013	5059	747	Undergraduate	689	61	Undergraduate	56	156	Undergraduate	138	290
				Graduate	58		Graduate	5		Graduate	18	
2015-2016	1490	4370	860	Undergraduate	750	125	Undergraduate	88	129	Undergraduate	102	344
				Graduate	110		Graduate	33		Graduate	27	
2016-2017	1466	4599	1323	Undergraduate	1180	102	Undergraduate	77	232	Undergraduate	185	729
				Graduate	143		Graduate	25		Graduate	47	
2017-2018	1400	5715	1445	Undergraduate	1271	122	Undergraduate	105	310	Undergraduate	241	449
				Graduate	174		Graduate	17		Graduate	69	
2018-2019	NA	NA	1301	Undergraduate	1162	NA	Undergraduate	NA	NA	Undergraduate	NA	292
				Graduate	139		Graduate	NA		Graduate	NA	
Total	6369	19,743	6892-34.9%	Undergraduate	6181	470-6%	Undergraduate	382	1162-16%	Undergraduate	968	2730
				Graduate	711		Graduate	88		Graduate	194	



 **Lebanese International University**
IT and Data Unit



Scholarship	# of Students
LIU Financial Aid	2071
SPARK	286
LAsER	265
No Scholarships	771
Grand Total	2622 out of 3393

77.27%
funded scholarship by LIU





How the R-SOS office could support Project SEAD Outcome at LIU:

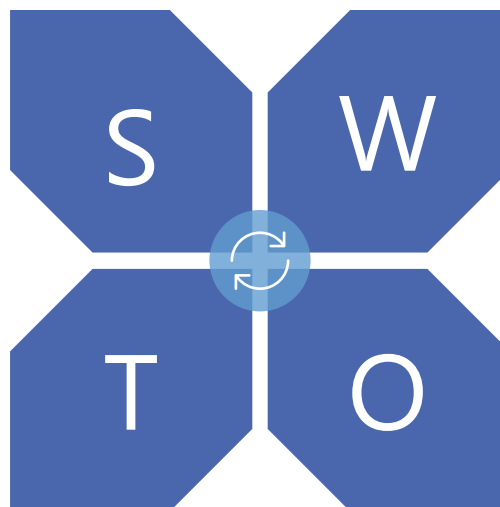
1. Enhance LIU managerial capacities of SEAD implementation to plan, budget, deliver, monitor and evaluate education services
2. Enhance quality of education services and learning environment to ensure grade-appropriate learning outcomes for youth and children

SWOT ANALYSIS ON THE TWO OUTCOMES:



STRENGTHS

What does LIU do well?



WEAKNESSES

Where could LIU ADAPT and improve?

THREATS

What steps and actions could set for LIU to sustain the program?

OPPORTUNITIES

What are external challenges LIU could study?

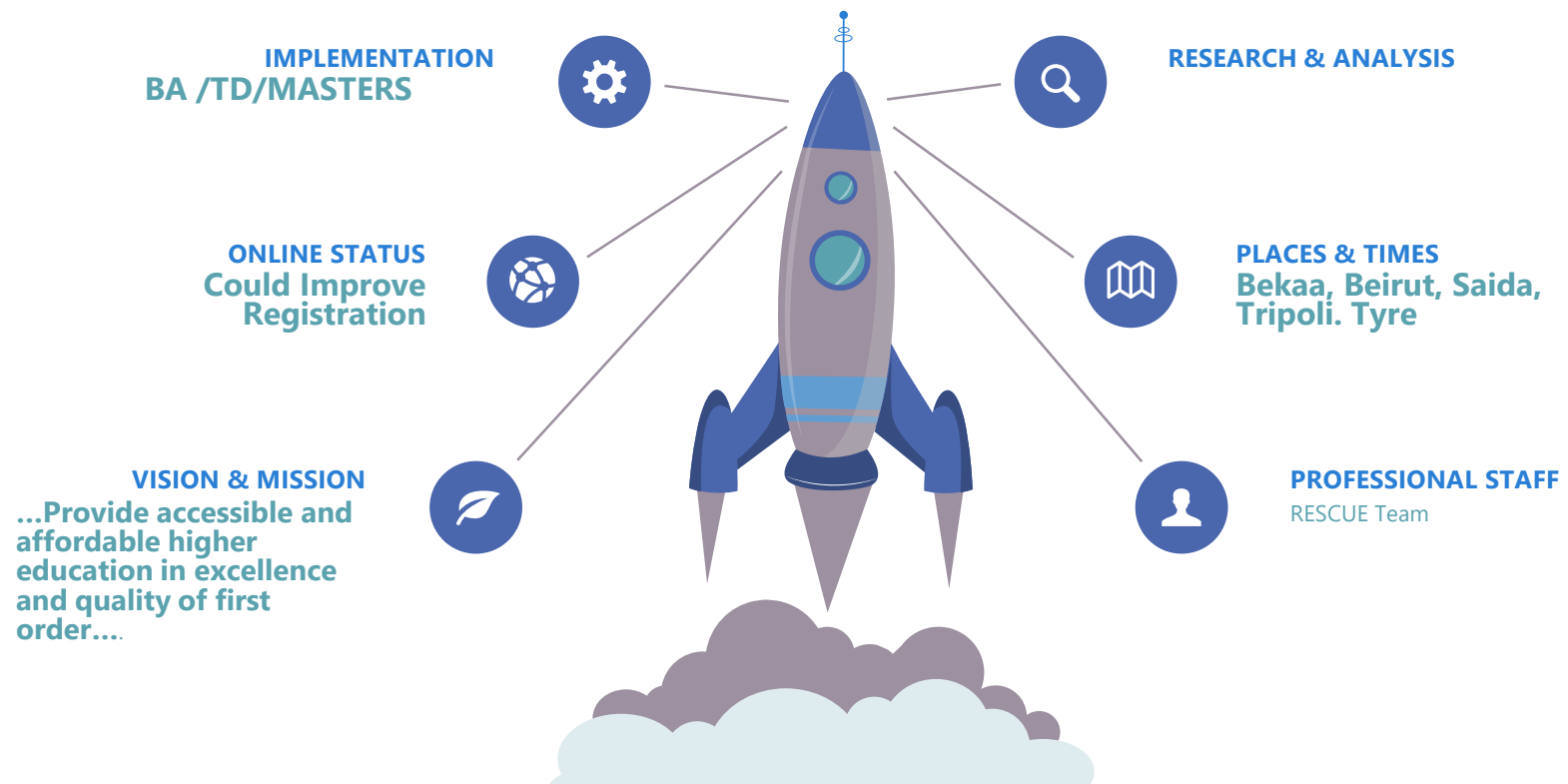


How the R-SOS office could support to an already established process at LIU across all 9 campuses?

IDENTIFY SMART THE CHALLENGES OF SYRIAN STUDENTS

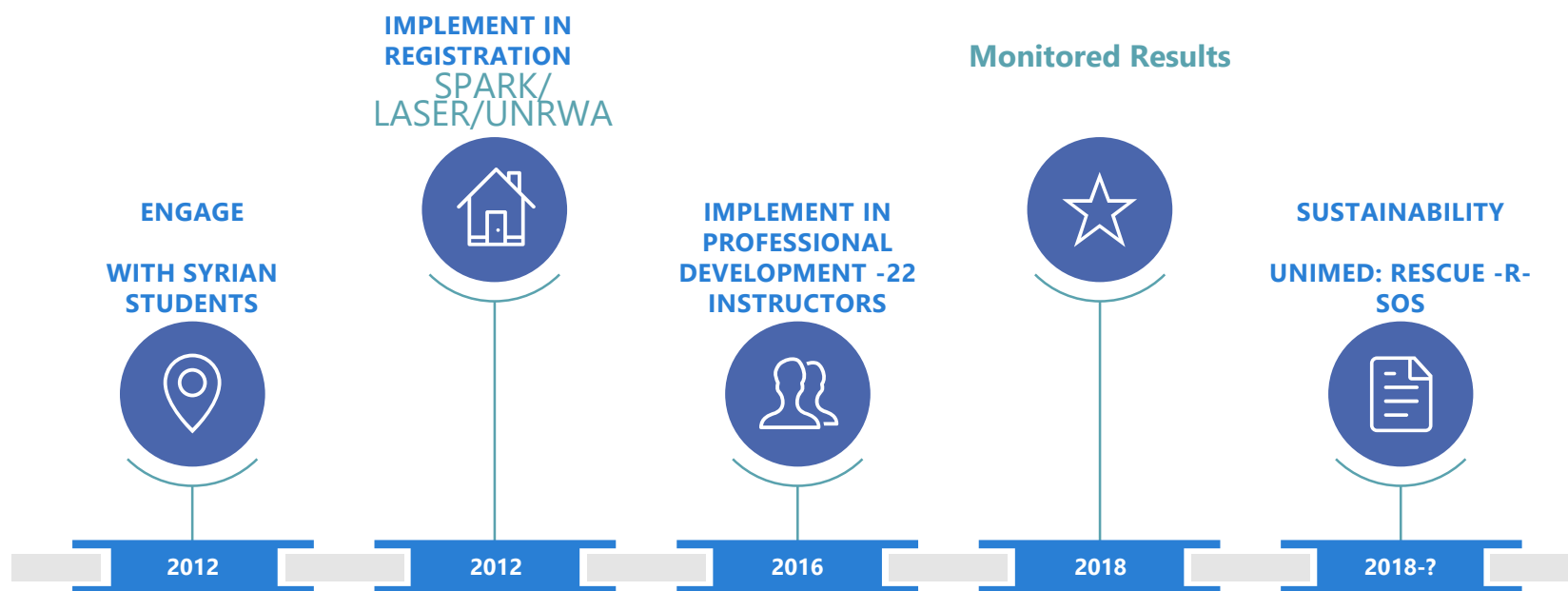


START-UP ROCKET: LIU-SOED WITH PROJECT SEAD AND R-SOS OFFICE

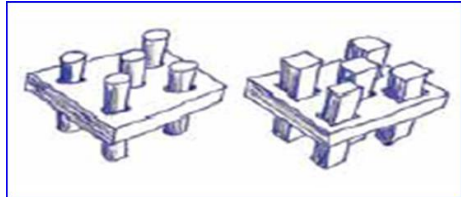


LIU-SOED WITH PROJECT SEAD AND R-SOS OFFICE

Initiate-Improve-Impact

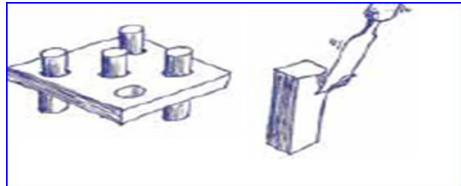


CURRICULUM APPROACH



SEGREGATION

An education system for 'normal' children (round pegs); and a different system for 'special needs' children (square pegs).



INTEGRATION

Trying to change children so they fit into the 'regular' system (making square pegs fit into round holes). The system stays the same. The child must adapt or fail.

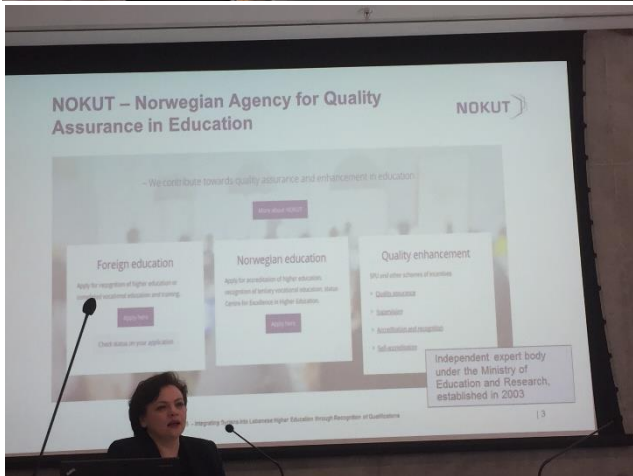


INCLUSION

All children are different and all can learn – we change the system to accommodate everyone and achieve education for all.



THE INCLUSION OF SYRIANS INTO LIU THROUGH RECOGNITION OF QUALIFICATIONS: ADMINISTRATION OFFICE HAVING TRAINING ON SUCH PROCESS



ON-GOING TECHNIQUES IN DELIVERING HIGHER EDUCATION ACCESS PROGRAMS (HOPES) 31 CERTIFIED LIU INSTRUCTORS NOW TEACH FOUNDATION STAGES TO SYRIANS ALONE IN COLLABORATION WITH BRITISH COUNCIL

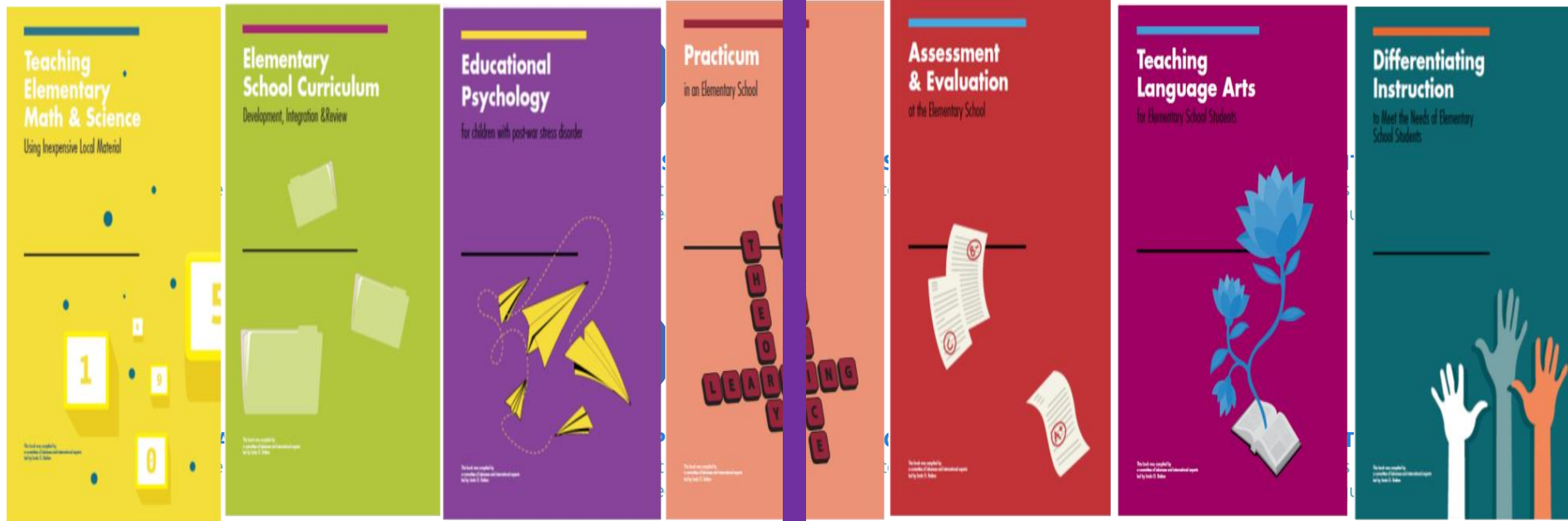




MAINTAIN THE TRAINING OF 22 LIU SOED GRADUATE. TEAM



LIU ICONIC SERVICES





2016

2018





Home-Room Teacher

Home-Tent Teacher

A standardized approach is needed



A unit for Instructors
& Admission Staff
Training on both
Lebanese & Syrians

Maintain Academic
Path

Inclusion of Basic
Skills &
Competencies





Run Research Study Parallel to RESCUE





EFFECTIVE ENGAGEMENT,
EXCELLENT
EMPOWERMENT

- <https://www.dropbox.com/s/qic9qnglg9jqwld/TD%20-%20LIU.mp4?dl=0>







UNIMED WEEK IN BRUSSELS

19-21 MARCH 2019



ABOUT LIU

WWW.LIU.EDU.LB

	anwar.kawtharani@liu.edu.lb
	@kawtharaniAnwar
	anwarkawtharani
	0096170976967



UNIMED WEEK IN BRUSSELS

19-21 MARCH 2019